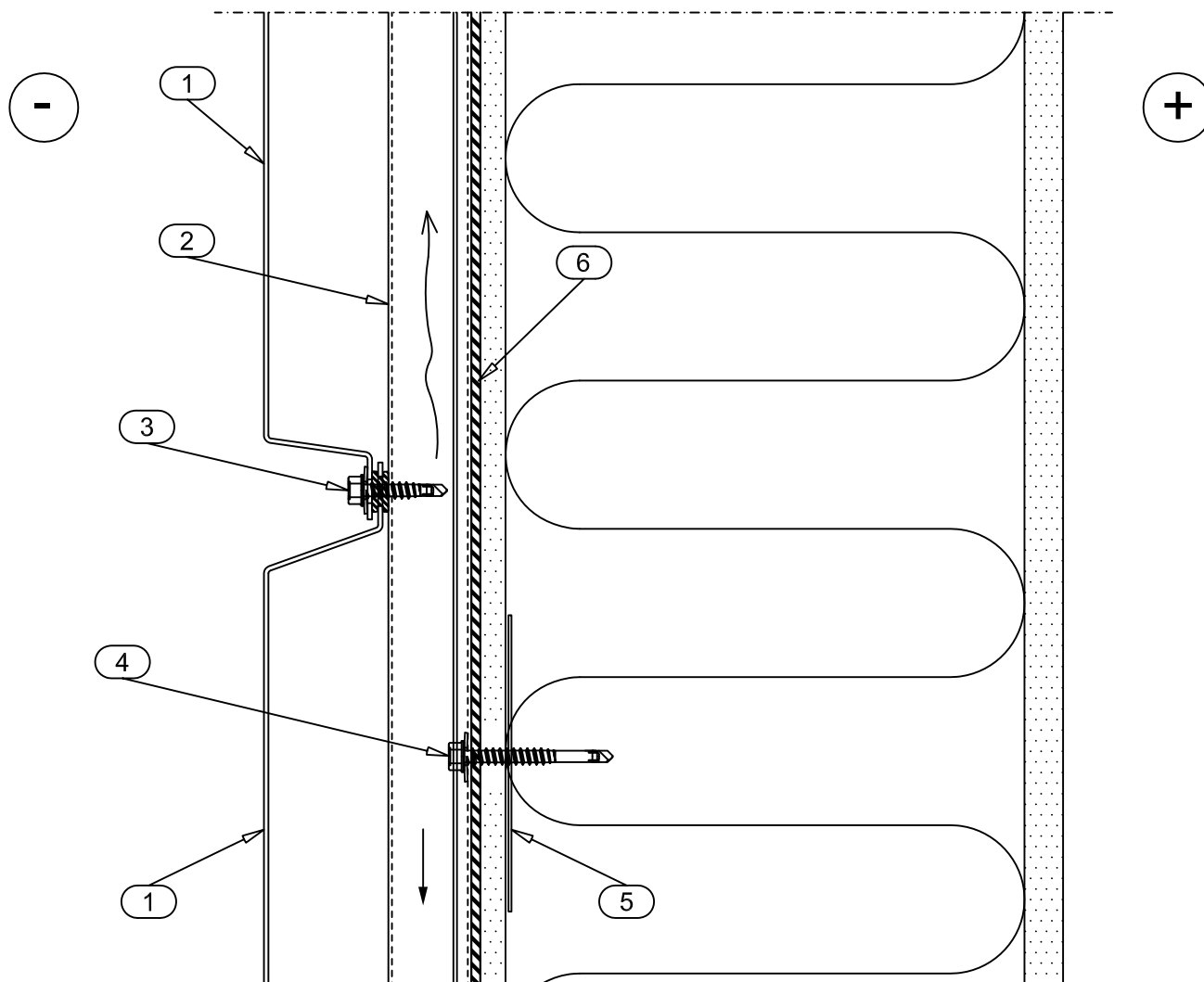


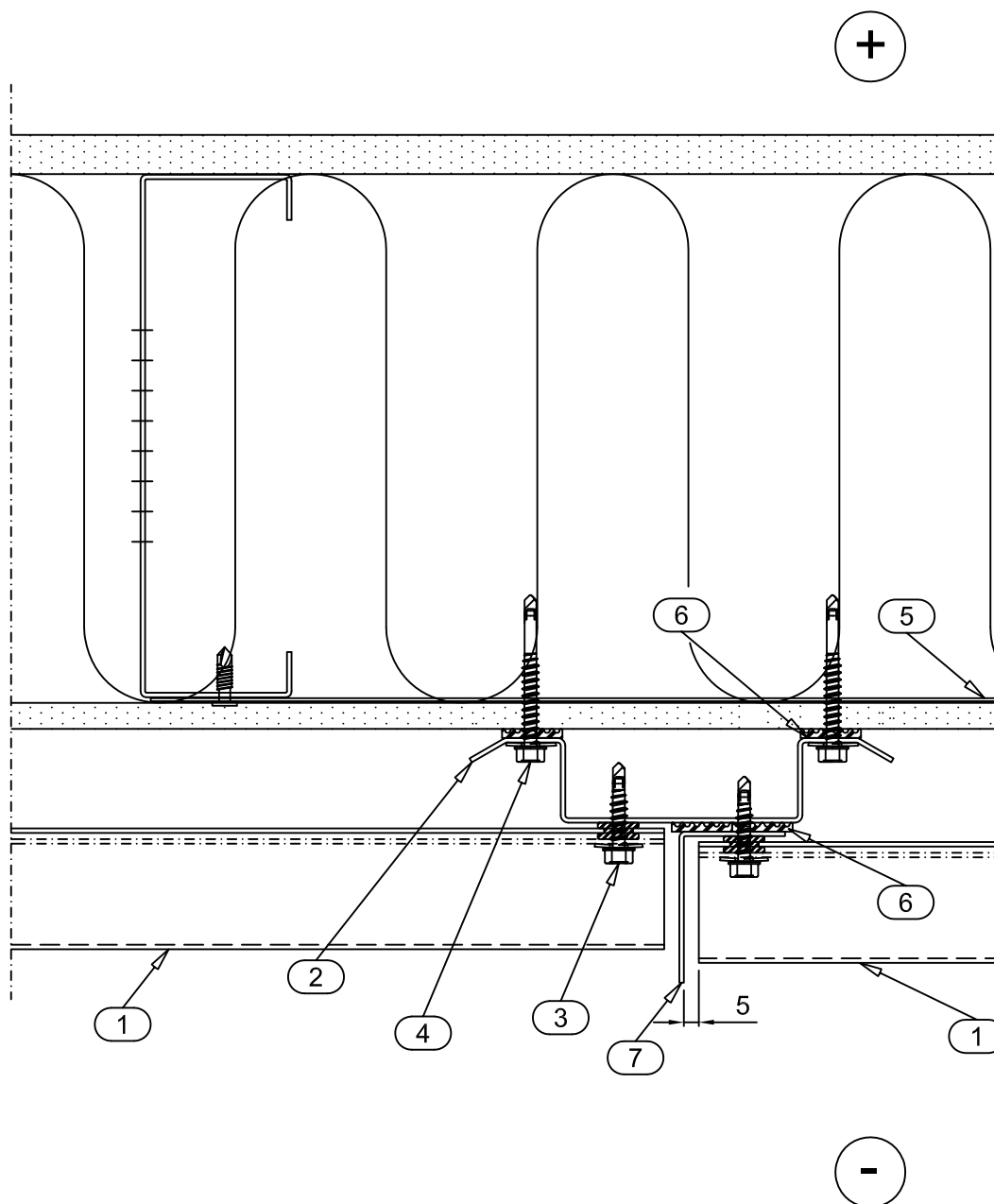
Date 12.08.2011	Rev. date	Work nr.	Drw. nr.	Rev.
Drawn by Ruukki	Rev.		CLC30DE-2	
Scale 1:2.5	Building		File nr.	



- ☐ 1. LAMELLA COR-TEN 30
- ☐ 2. SUPPORT STUD CA1SS4
- ☐ 3. SCREW S3H60029D03S6 (SFS intec SX3/9-S16-6x29)
+ SEPARATING PIECE EPDM CA3SP814
- ☐ 4. SCREW S3H60050D03S6 (SFS intec SX3/20-S16-6x50)
- ☐ 5. HORIZONTAL BRACE STRIP (for fastening studs)
- ☐ 6. SEPARATING STRIP EPDM CA3SE420

☒ DELIVERY OF RUUKKI

12.08.2011	Rev. date	Work nr.	Drw. nr.	Rev.
Ruukki	Rev.		CLC30DE-3	
1:2.5	Building		File nr.	

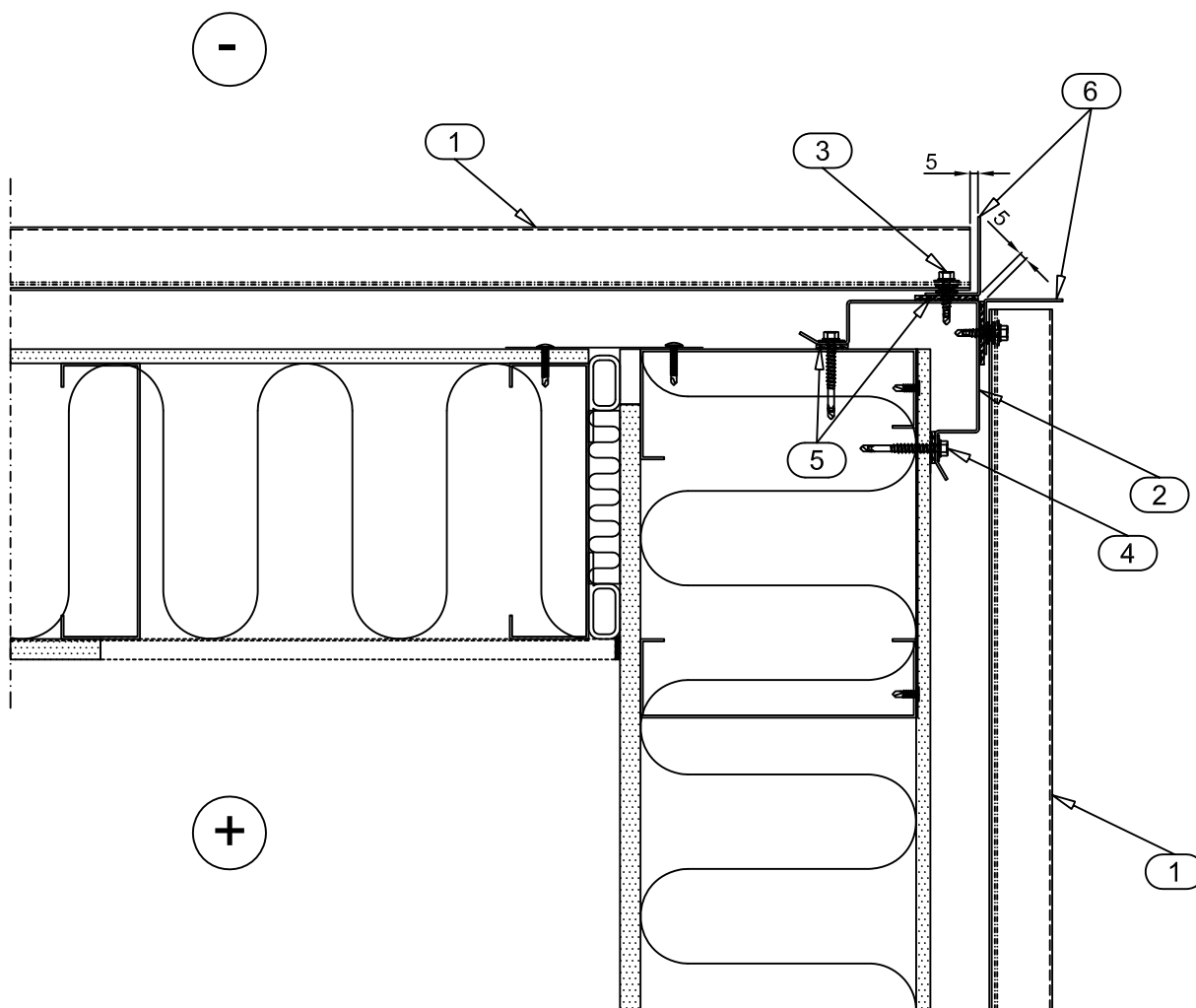


- ☐ 1. LAMELLA COR-TEN 30
- ☐ 2. SUPPORT STUD CA1SS4
- ☐ 3. SCREW S3H60029D03S6 (SFS intec SX3/9-S16-6x29)
+ SEPARATING PIECE EPDM CA3SP814
- ☐ 4. SCREW S3H60050D03S6 (SFS intec SX3/20-S16-6x50)
- ☐ 5. HORIZONTAL BRACE STRIP (for fastening studs)
- ☐ 6. SEPARATING STRIP EPDM CA3SE420
- ☐ 7. VERTICAL JOINT FLASHING CA1VJ16

☒ DELIVERY OF RUUKKI

Lamella Cor-Ten 30 External corner Horizontal section

Date 12.08.2011	Rev. date	Work nr.	Drw. nr. CLC30DE-4	Rev.
Drawn by Ruukki	Rev.			
Scale 1:5	Building		File nr.	

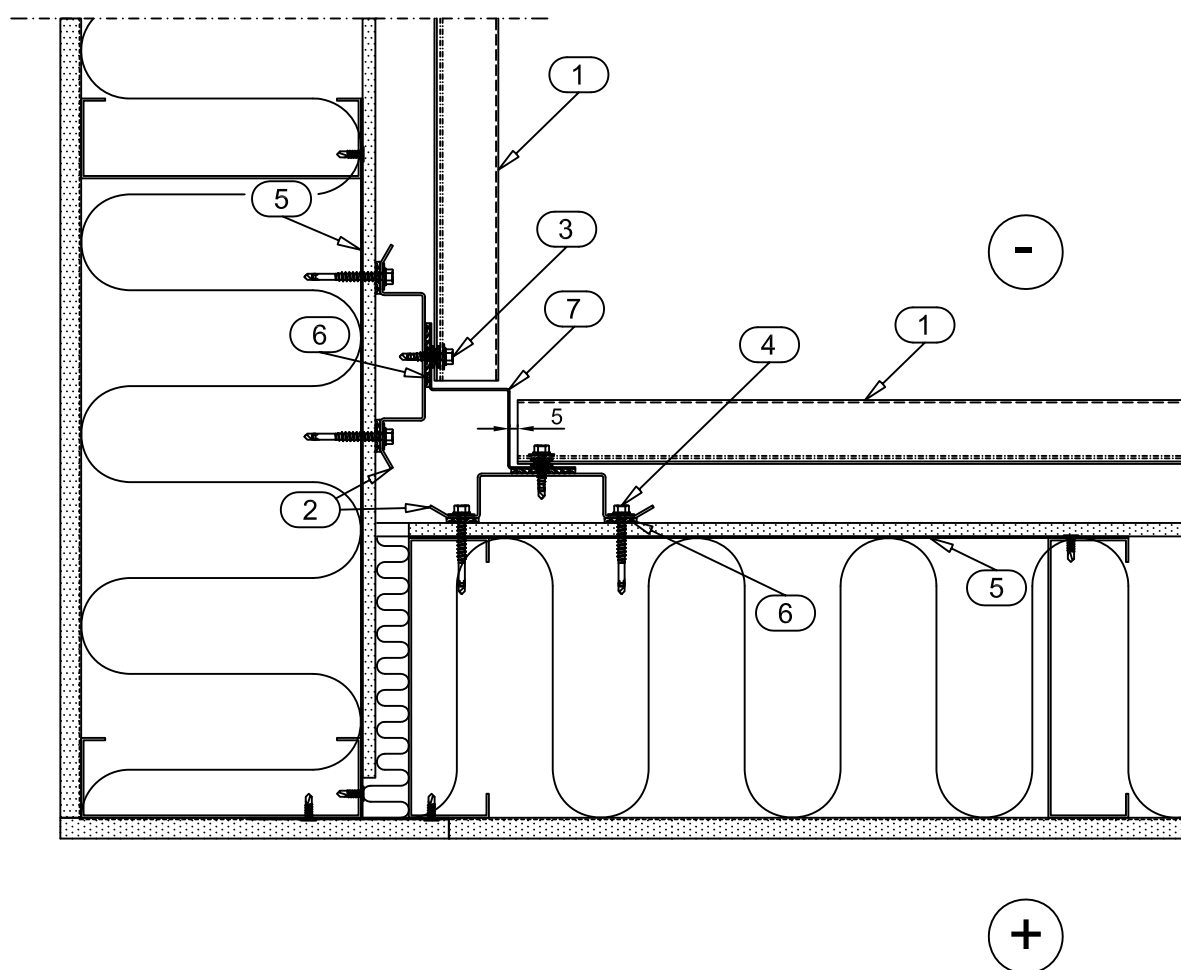


- ☐ 1. LAMELLA COR-TEN 30
- ☐ 2. SUPPORT STUD CORNER CA1SSC3
- ☐ 3. SCREW S3H60029D03S6 (SFS intec SX3/9-S16-6x29)
+ SEPARATING PIECE EPDM CA3SP814
- ☐ 4. SCREW S3H60050D03S6 (SFS intec SX3/20-S16-6x50)
- ☐ 5. SEPARATING STRIP EPDM CA3SE420
- ☐ 6. EXTERNAL CORNER FLASHING CA1EC15

☒ DELIVERY OF RUUKKI

Lamella Cor-Ten 30 Internal corner Horizontal section

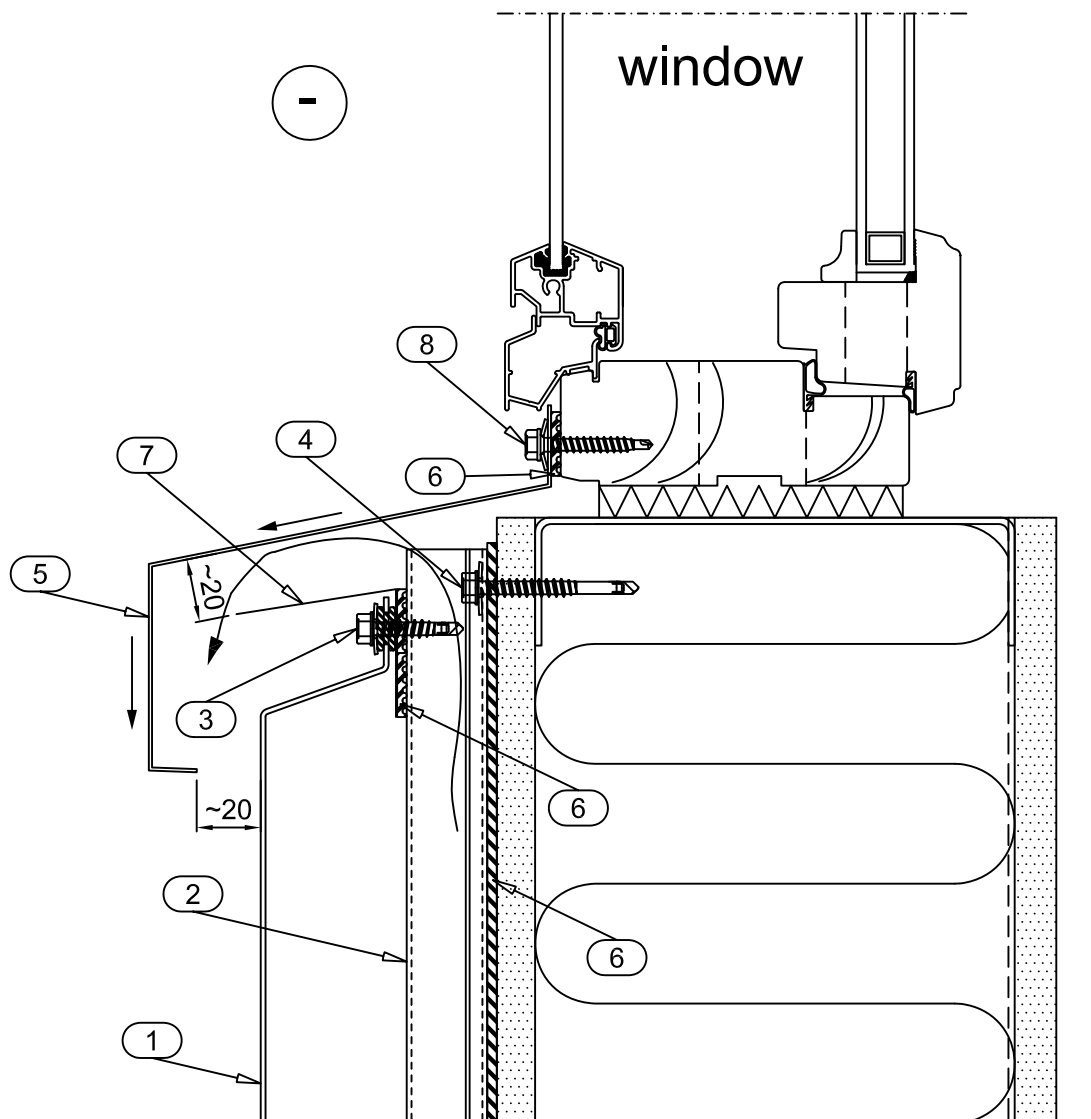
Date 12.08.2011	Rev. date	Work nr.	Drw. nr.	Rev.
Drawn by Ruukki	Rev.		CLC30DE-5	
Scale 1:5	Building		File nr.	



- ☐ 1. LAMELLA COR-TEN 30
- ☐ 2. SUPPORT STUD CA1SS4
- ☐ 3. SCREW S3H60029D03S6 (SFS intec SX3/9-S16-6x29)
+ SEPARATING PIECE EPDM CA3SP814
- ☐ 4. SCREW S3H60050D03S6 (SFS intec SX3/20-S16-6x50)
- ☐ 5. HORIZONTAL BRACE STRIP (for fastening studs)
- ☐ 6. SEPARATING STRIP EPDM CA3SE420
- ☐ 7. INTERNAL CORNER FLASHING CA1IC13

☒ DELIVERY OF RUUKKI

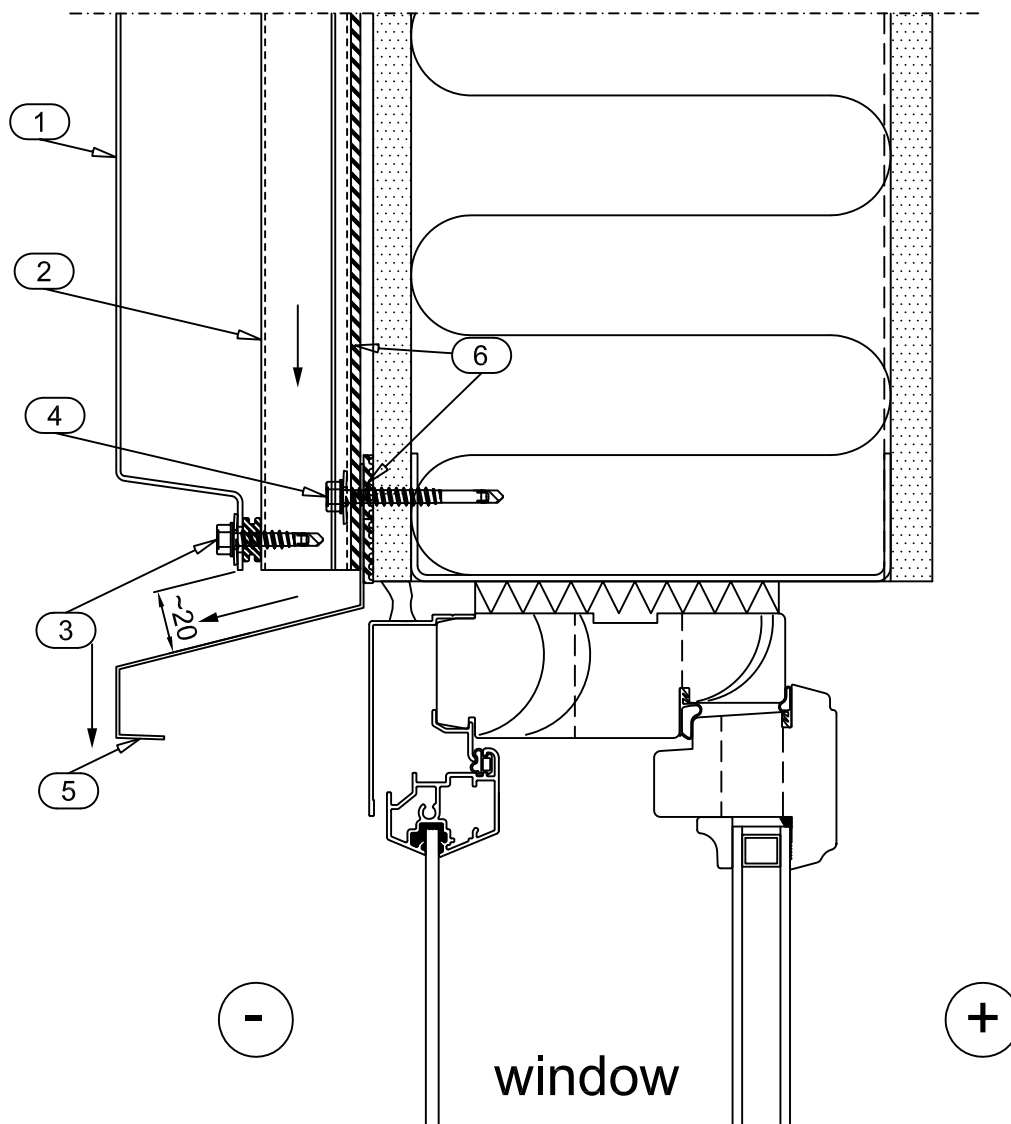
Date 12.08.2011	Rev. date	Work nr.	Drw. nr.	Rev.
Drawn by Ruukki	Rev.		CLC30DE-6	
Scale 1:2.5	Building		File nr.	



- ☐ 1. LAMELLA COR-TEN 30
- ☐ 2. SUPPORT STUD CA1SS4
- ☐ 3. SCREW S3H60029D03S6 (SFS intec SX3/9-S16-6x29)
+ SEPARATING PIECE EPDM CA3SP814
- ☐ 4. SCREW S3H60050D03S6 (SFS intec SX3/20-S16-6x50)
- ☐ 5. SILL FLASHING CA1S2X
- ☐ 6. SEPARATING STRIP EPDM CA3SE420
- ☐ 7. STORM FLASHING CA1ST1X (PVDF coated t=0.6)
- ☐ 8. SCREW S3H48035WA4 (SFS intec SW2-S-A14-4.8x35)

☒ DELIVERY OF RUUKKI

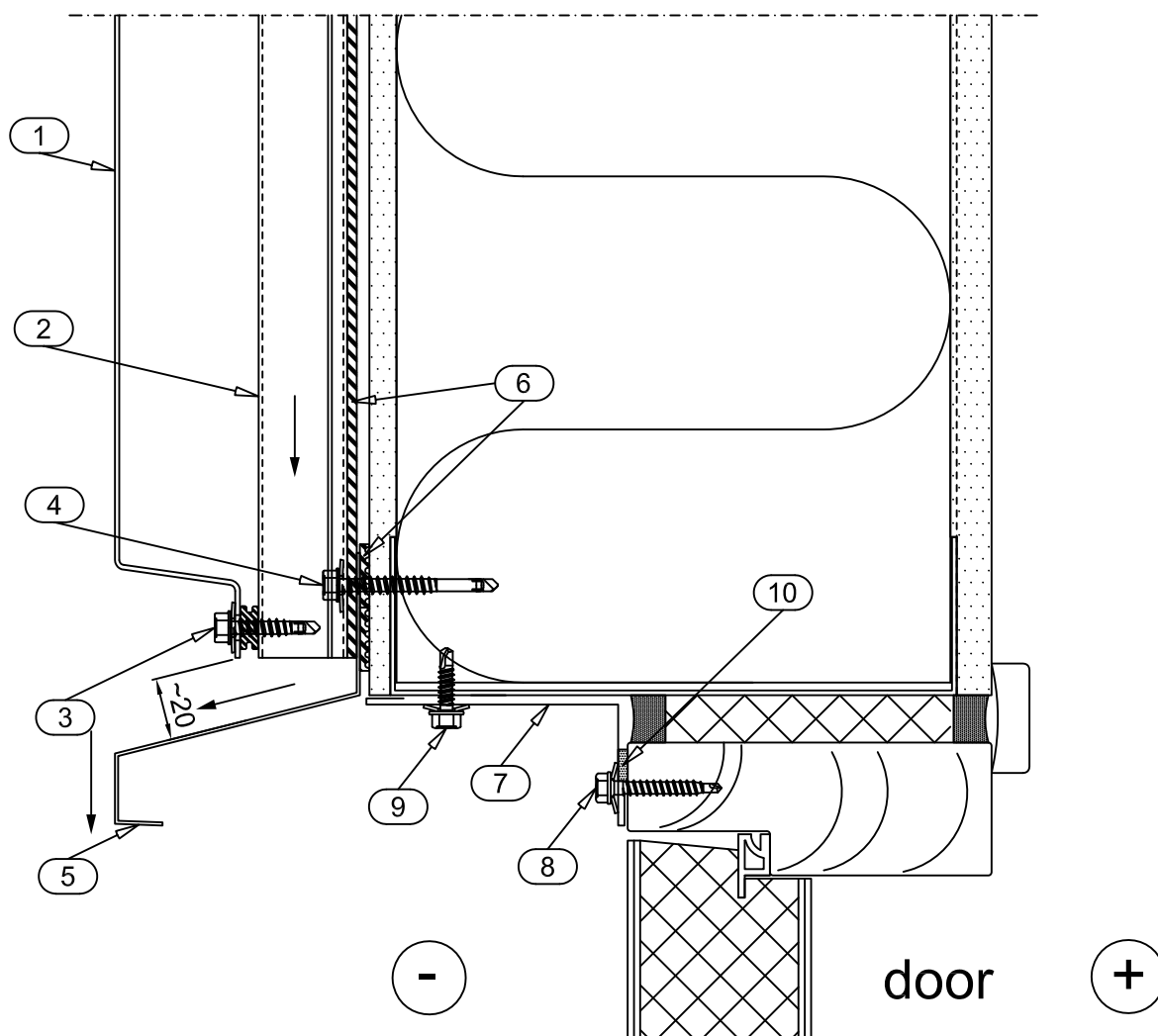
Date 12.08.2011	Rev. date	Work nr.	Drw. nr.	Rev.
Drawn by Ruukki	Rev.		CLC30DE-7	
Scale 1:2.5	Building			File nr.



- ☐ 1. LAMELLA COR-TEN 30
- ☐ 2. SUPPORT STUD CA1SS4
- ☐ 3. SCREW S3H60029D03S6 (SFS intec SX3/9-S16-6x29)
+ SEPARATING PIECE EPDM CA3SP814
- ☐ 4. SCREW S3H60050D03S6 (SFS intec SX3/20-S16-6x50)
- ☐ 5. (SILL) FLASHING CA1S2X
- ☐ 6. SEPARATING STRIP EPDM CA3SE420

☒ DELIVERY OF RUUKKI

Date 12.08.2011	Rev. date	Work nr.	Drw. nr.	Rev.
Drawn by Ruukki	Rev.		CLC30DE-8	
Scale 1:2.5	Building		File nr.	

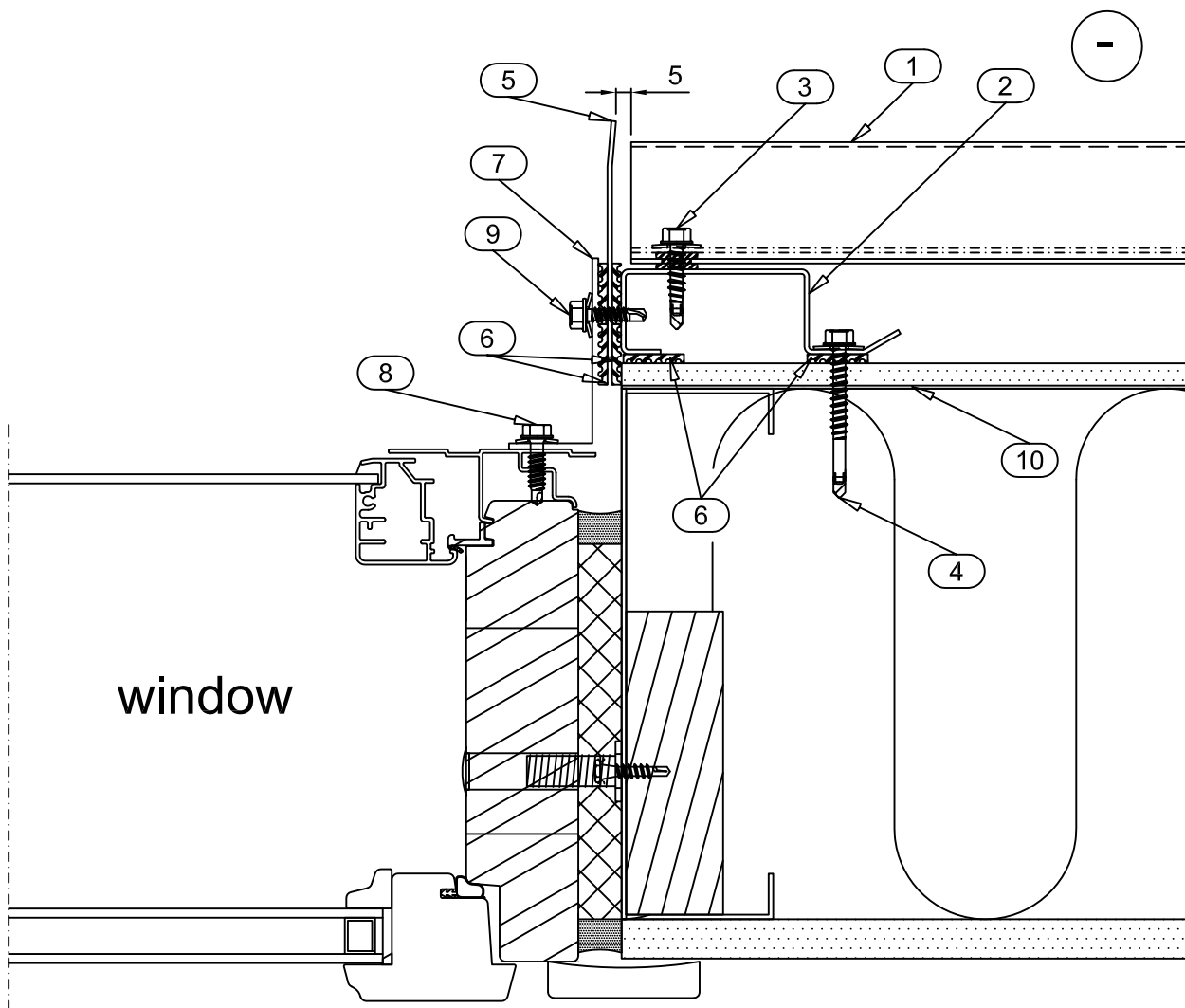


- ☐ 1. LAMELLA COR-TEN 30
- ☐ 2. SUPPORT STUD CA1SS4
- ☐ 3. SCREW S3H60029D03S6 (SFS intec SX3/9-S16-6x29)
+ SEPARATING PIECE EPDM CA3SP814
- ☐ 4. SCREW S3H60050D03S6 (SFS intec SX3/20-S16-6x50)
- ☐ 5. (SILL) FLASHING CA1S2X
- ☐ 6. SEPARATING STRIP EPDM CA3SE420
- ☐ 7. COVER FLASHING CA1C10X (PVDF coated t=0.6)
- ☐ 8. SCREW S3H48035WA4 (SFS intec SW2-S-A14-4.8x35)
- ☐ 9. SCREW S3H48020D03A4 (SFS intec SD3-S-A14-4.8x20)
- ☐ 10. SEALING STRIP EA3SS410

☒ DELIVERY OF RUUKKI

Lamella Cor-Ten 30 Vertical edge of window Horizontal section

Date 12.08.2011	Rev. date	Work nr.	Drw. nr. CLC30DE-9	Rev.
Drawn by Ruukki	Rev.			
Scale 1:2.5	Building		File nr.	

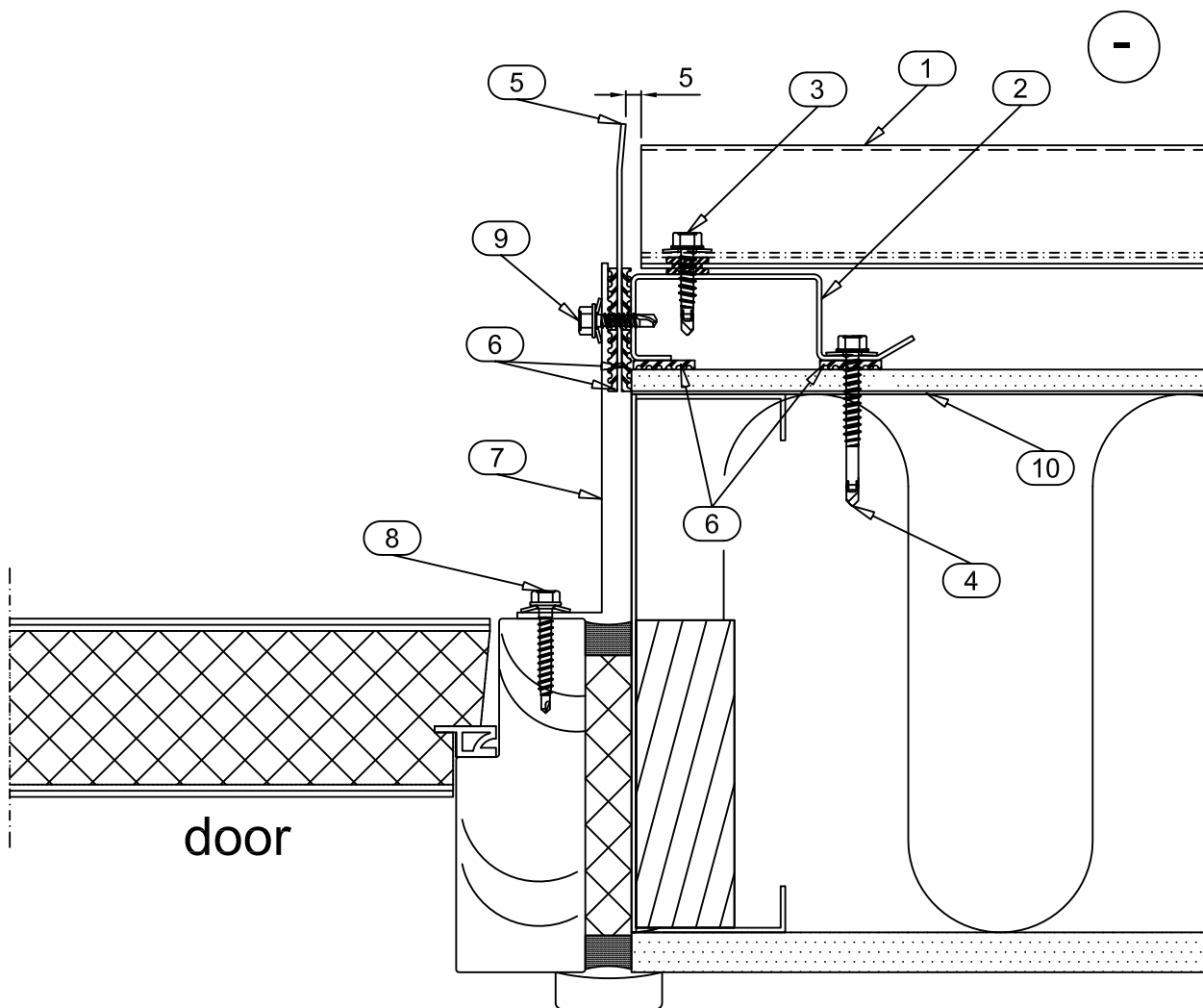


- ☐ 1. LAMELLA COR-TEN 30
- ☐ 2. SUPPORT STUD CA1RS2
- ☐ 3. SCREW S3H60029D03S6 (SFS intec SX3/9-S16-6x29)
+ SEPARATING PIECE EPDM CA3SP814
- ☐ 4. SCREW S3H60050D03S6 (SFS intec SX3/20-S16-6x50)
- ☐ 5. COVER FLASHING CA1C13
- ☐ 6. SEPARATING STRIP EPDM CA3SE420
- ☐ 7. COVER FLASHING CA1C10X (PVDF coated t=0.6)
- ☐ 8. SCREW S3H55022L02A4 (SFS intec SL2-S-A14-5.5x22)
- ☐ 9. SCREW S3H48020D03A4 (SFS intec SD3-S-A14-4.8x20)
- ☐ 10. HORIZONTAL BRACE STRIP (for fastening studs)

☒ DELIVERY OF RUUKKI

Lamella Cor-Ten 30 Vertical edge of door Horizontal section

Date 12.08.2011	Rev. date	Work nr.	Drw. nr. CLC30DE-10	Rev.
Drawn by Ruukki	Rev.			
Scale 1:2.5	Building		File nr.	

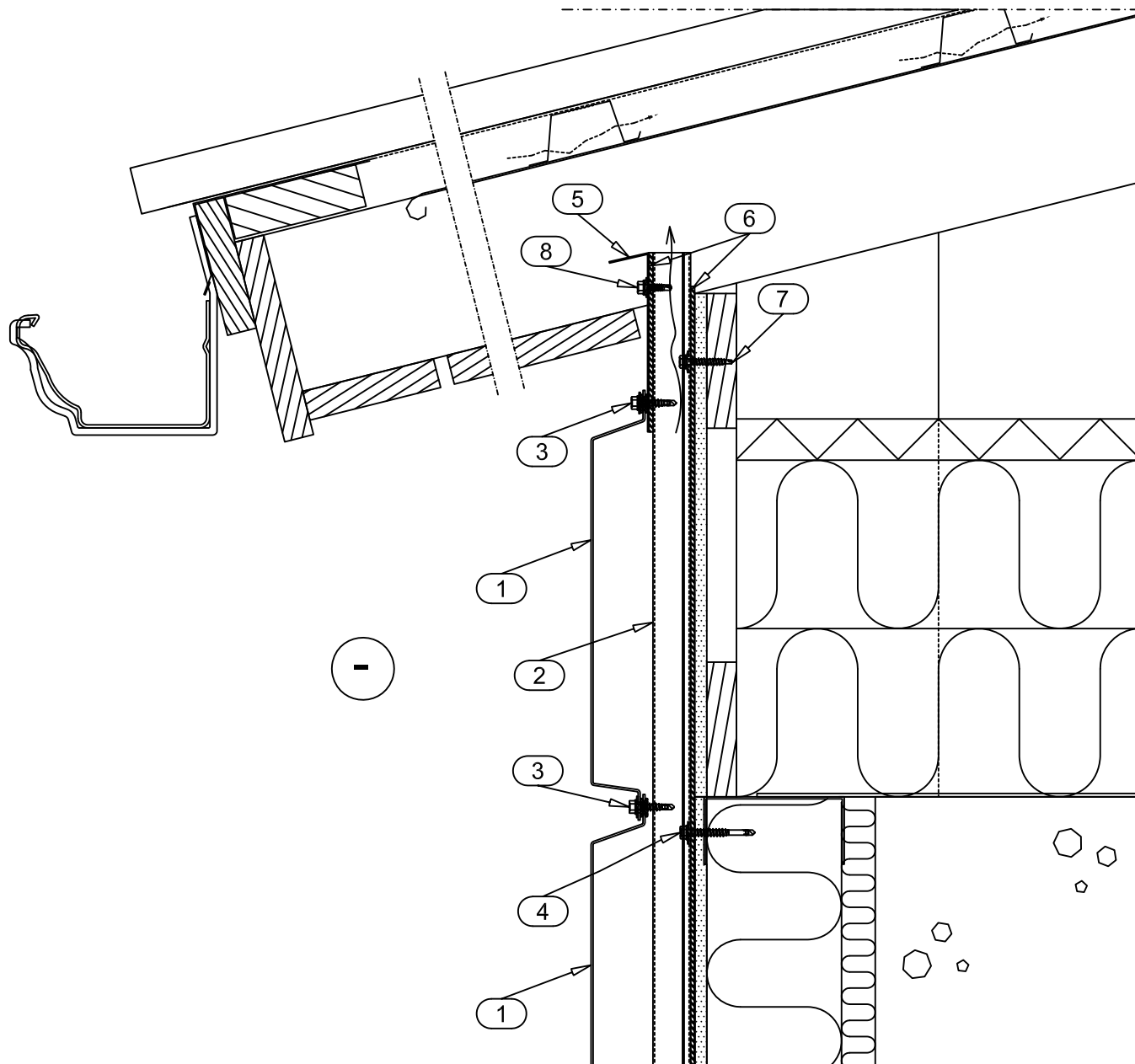


- ☐ 1. LAMELLA COR-TEN 30
- ☐ 2. SUPPORT STUD CA1RS2
- ☐ 3. SCREW S3H60029D03S6 (SFS intec SX3/9-S16-6x29)
+ SEPARATING PIECE EPDM CA3SP814
- ☐ 4. SCREW S3H60050D03S6 (SFS intec SX3/20-S16-6x50)
- ☐ 5. COVER FLASHING CA1C13
- ☐ 6. SEPARATING STRIP EPDM CA3SE420
- ☐ 7. COVER FLASHING CA1C10X (PVDF coated t=0.6)
- ☐ 8. SCREW S3H48035WA4 (SFS intec SW2-S-A14-4.8x35)
- ☐ 9. SCREW S3H48020D03A4 (SFS intec SD3-S-A14-4.8x20)
- ☐ 10. HORIZONTAL BRACE STRIP (for fastening studs)

☒ DELIVERY OF RUUKKI

Lamella Cor-Ten 30 Side eaves Vertical section

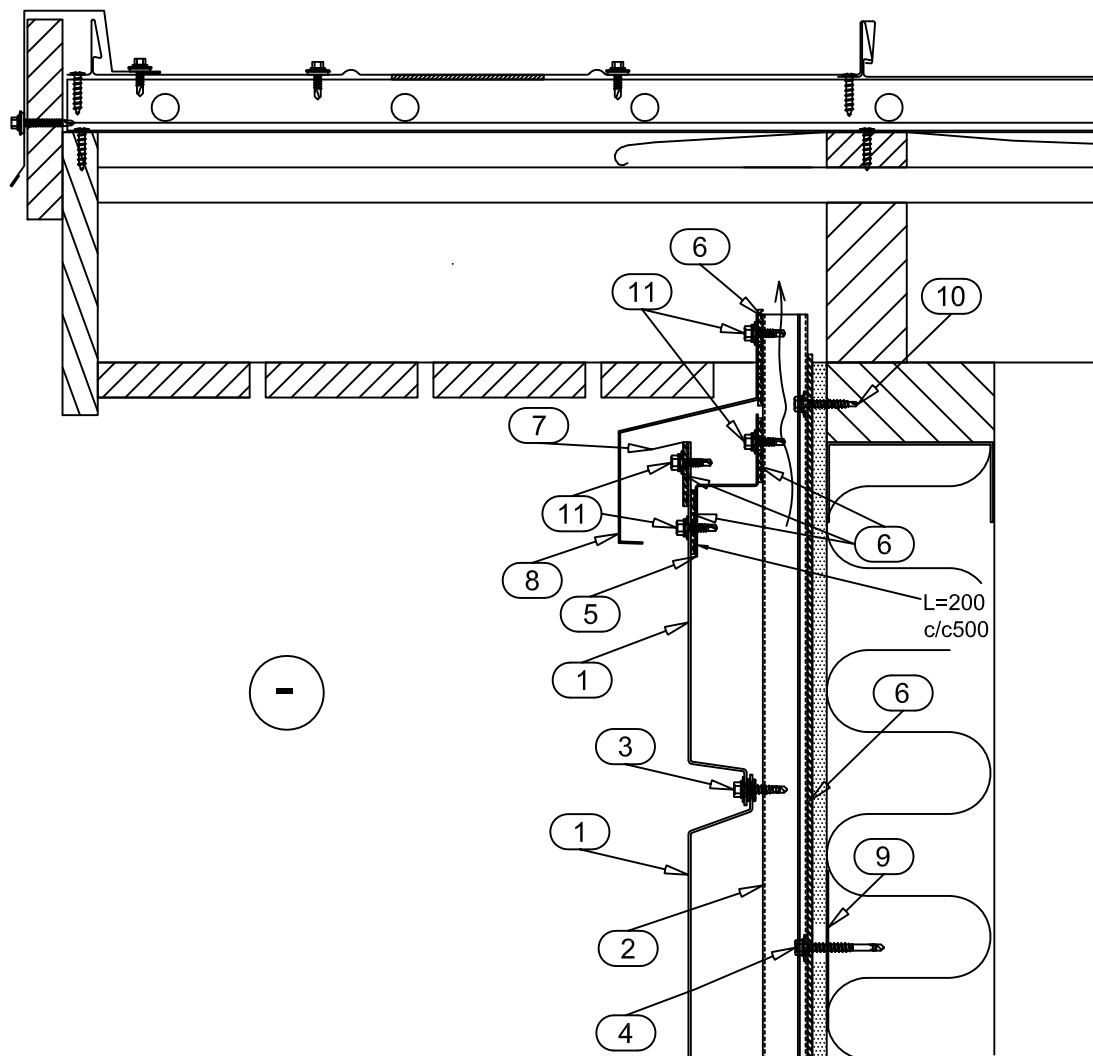
Date 12.08.2011	Rev. date	Work nr.	Drw. nr. CLC30DE-11	Rev.
Drawn by Ruukki	Rev.			
Scale 1:5	Building		File nr.	



- ☐ 1. LAMELLA COR-TEN 30
- ☐ 2. SUPPORT STUD CA1SS4
- ☐ 3. SCREW S3H60029D03S6 (SFS intec SX3/9-S16-6x29)
+ SEPARATING PIECE EPDM CA3SP814
- ☐ 4. SCREW S3H60050D03S6 (SFS intec SX3/20-S16-6x50)
- ☐ 5. STORM FLASHING CA1ST2X
- ☐ 6. SEPARATING STRIP EPDM CA3SE420
- ☐ 7. SCREW S3H48035WA4 (SFS intec SW2-S-A14-4.8x35)
- ☐ 8. SCREW S3H48020D03A4 (SFS intec SD3-S-A14-4.8x20)

☒ DELIVERY OF RUUKKI

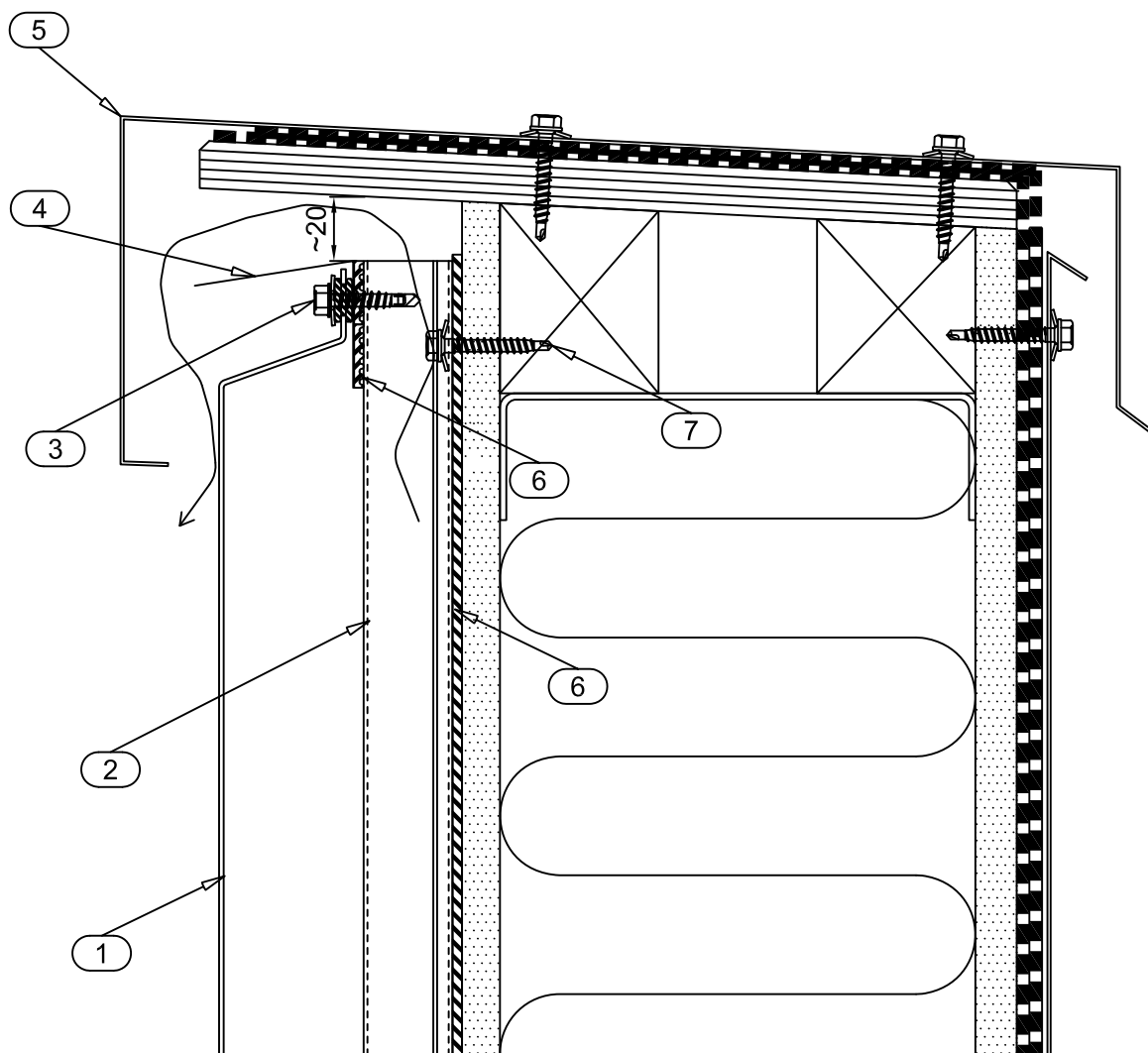
Date 12.08.2011	Rev. date	Work nr.	Drw. nr.	Rev.
Drawn by Ruukki	Rev.		CLC30DE-12	
Scale 1:5	Building	File nr.		



- ☐ 1. LAMELLA COR-TEN 30
- ☐ 2. SUPPORT STUD CA1SS4
- ☐ 3. SCREW S3H60029D03S6 (SFS intec SX3/9-S16-6x29)
+ SEPARATING PIECE EPDM CA3SP814
- ☐ 4. SCREW S3H60050D03S6 (SFS intec SX3/20-S16-6x50)
- ☐ 5. SUPPORT FLASHING CA1SU2 (PVDF coated t=1.2)
- ☐ 6. SEPARATING STRIP EPDM CA3SE420
- ☐ 7. STORM FLASHING CA1ST1X (PVDF coated t=0.6)
- ☐ 8. EAVES FLASHING CA1E4X
- ☐ 9. HORIZONTAL BRACE STRIP (for fastening studs)
- ☐ 10. SCREW S3H48035WA4 (SFS intec SW2-S-A14-4.8x35)
- ☐ 11. SCREW S3H48020D03A4 (SFS intec SD3-S-A14-4.8x20)

☒ DELIVERY OF RUUKKI

Date 12.08.2011	Rev. date	Work nr.	Drw. nr.	Rev.
Drawn by Ruukki	Rev.		CLC30DE-13	
Scale 1:2.5	Building		File nr.	

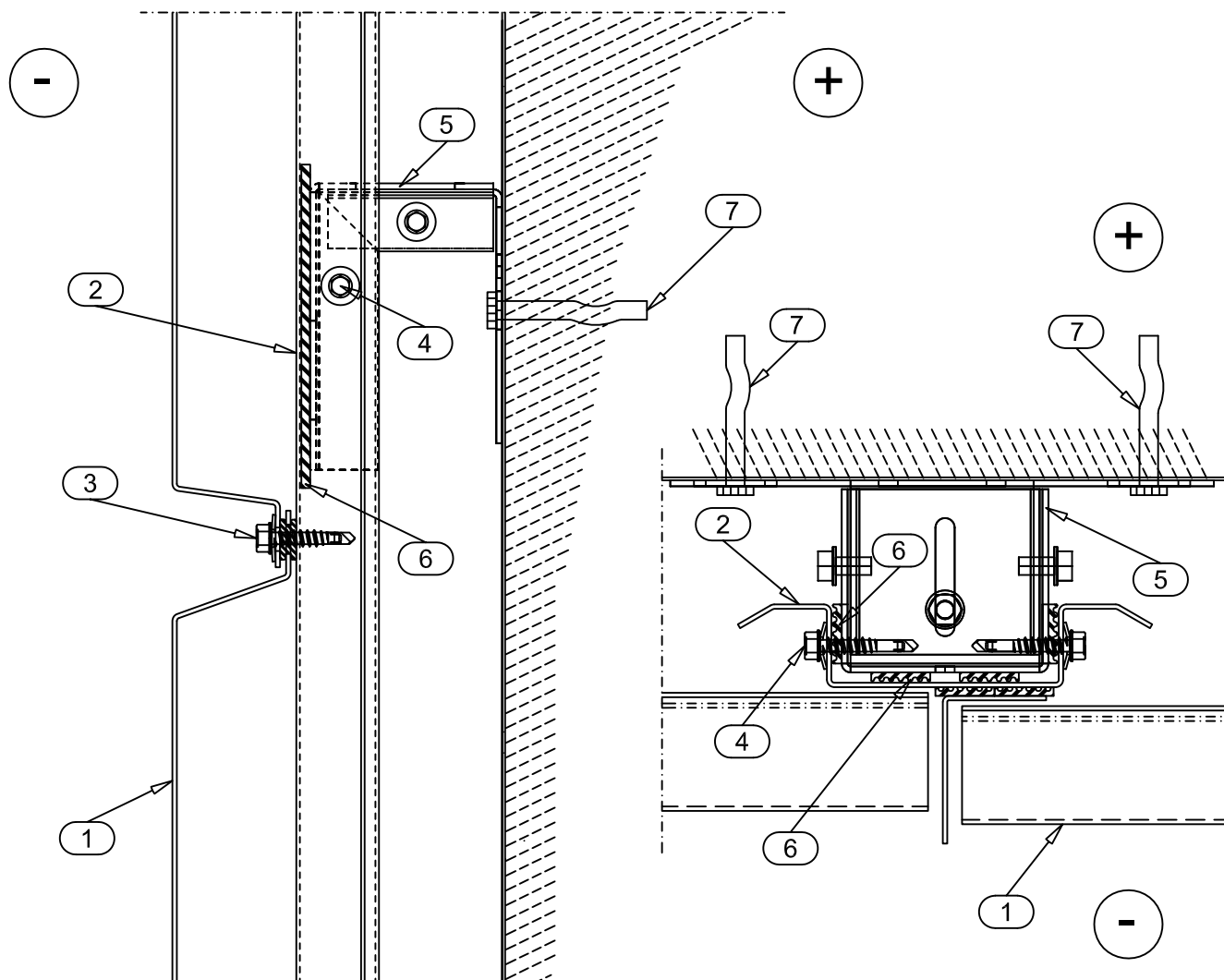


- ☐ 1. LAMELLA COR-TEN 30
- ☐ 2. SUPPORT STUD CA1SS4
- ☐ 3. SCREW S3H60029D03S6 (SFS intec SX3/9-S16-6x29)
+ SEPARATING PIECE EPDM CA3SP814
- ☐ 4. STORM FLASHING CA1ST1X (PVDF coated t=0.6)
- ☐ 5. EAVES FLASHING CA1E3X
- ☐ 6. SEPARATING STRIP EPDM CA3SE420
- ☐ 7. SCREW S3H48035WA4 (SFS intec SW2-S-A14-4.8x35)

☒ DELIVERY OF RUUKKI

Lamella Cor-Ten 30 Horizontal and vertical joint Support studs fastened by adjustable fastener

Date 12.08.2011	Rev. date	Work nr.	Drw. nr. CLC30DE-14	Rev.
Drawn by Ruukki	Rev.			
Scale 1:2.5	Building		File nr.	



- ☐ 1. LAMELLA COR-TEN 30
- ☐ 2. SUPPORT STUD CA1SS4
- ☐ 3. SCREW S3H60029D03S6 (SFS intec SX3/9-S16-6x29)
+ SEPARATING PIECE EPDM CA3SP814
- ☐ 4. SCREW S3H55033D05S6 (SFS intec SX5/8-S16-5.5x33)
- ☐ 5. ADJUSTABLE FASTENER CAFRSP
- ☐ 6. SEPARATING STRIP EPDM CA3SE420
- ☐ 7. FASTENER

☒ DELIVERY OF RUUKKI